



MESSAGE FROM THE PRESIDENT

As I recently reflected on the past year, I am reminded of the fact our father (Earl F. Sever III aka Lynn) never telling us "No" when it came to ideas we brought to him about the business. When I say he never told us "No," I am serious. Over the now 25+ history, my brother and I have shared managing the business with our father he simply said, "Figure it out."



The words "Figure it out" has done a ton for us and our business. By our father saying, "Figure it out" we learned so much more. Making us more resilient in times like 2020. Had he said, "No" which is probably what he would have liked to have said many times, we never would have had the challenge to seek a better understanding, to take that deep dive into the financial analysis, to learn how to better understand our team members and their true capabilities, to develop a strategic plan, to routinely review our areas of weakness, to collaborate more fully not only myself and Randy, but our entire team as well as bring in outside consultants that have been there and done it before.

Figure it out, was Lynn's way to propel us and the business as a whole to new heights. Lynn has vast knowledge of the business, his keen insight on what customers are thinking and their needs, what worked for him over his career in the business and what did not. Nevertheless, Lynn didn't always teach, he let us learn by doing and sometimes making our own mistakes. Moreover, when we made mistakes, he never said, "I told you so" or pointed fingers at either of us. He simply said, "Figure it out." This meant don't quit, get back on the saddle and determine why the results weren't what we were expecting and figure out what needed fixed to make it work.

Oh, I have to believe that after all the successes we have had in 2020, none of them would have been possible without the "Figure it out" mentality. During our most extremely volatile year, PSC achieved the following success:

- Acquired an Industrial Maintenance and Machinery Moving contractor in Cincinnati
- Started a separate steel fabrication shop in Milford, Ohio
- Acquired a 50k sq. ft. heavy industrial warehouse with (2) 30 ton OH Cranes
- Expanded our footprint in the greater Columbus region of central Ohio
- Established a Sr. Management team with over 200 collective years of experience
- Developed key team members that are now managing various aspects of their business unit
- Named 2020's Dayton Business Journal's Family Business of the Year
- Overall our team never lost focus, when challenged to work remotely, they "figured it out"

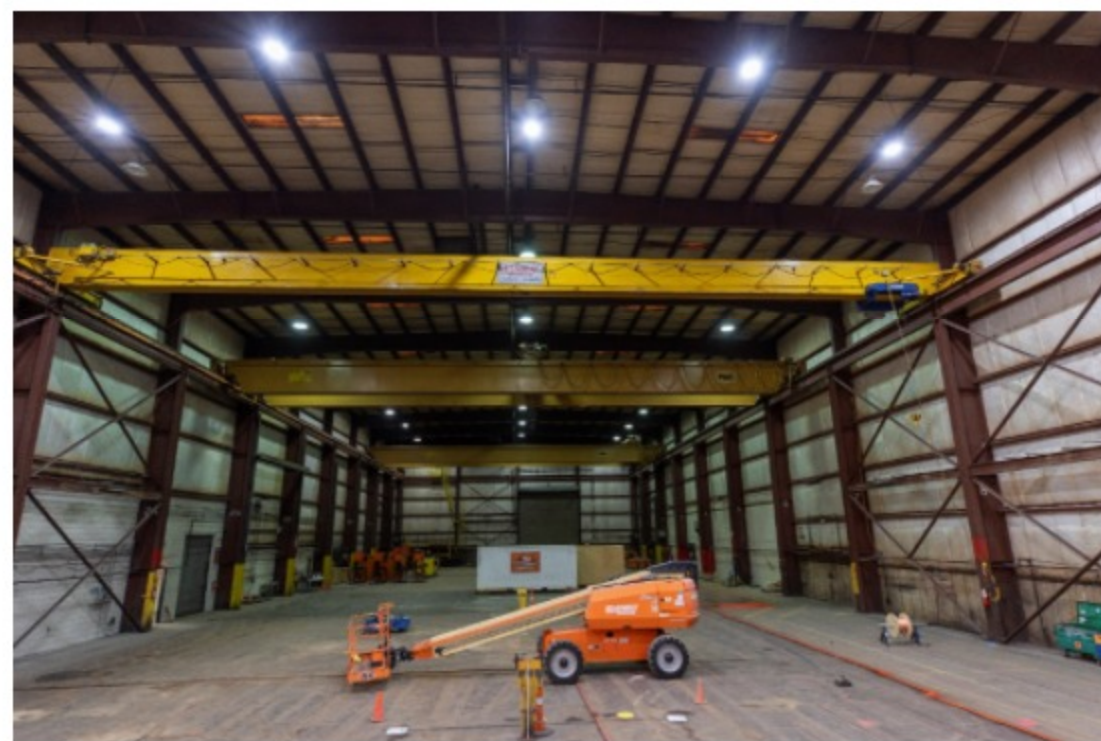
I am not sharing these items to gloat but rather emphasize the importance of "Figure it out." At PSC, when challenged Randy and I know we do not have all the answers immediately. However collectively with our team, outside board and consultants, we'll "Figure it out."

At this time, we would like to wish all of you the best in health and prosperity during 2021 and may you all "Figure it out."

Thank you,

James R. Sever
President & CEO

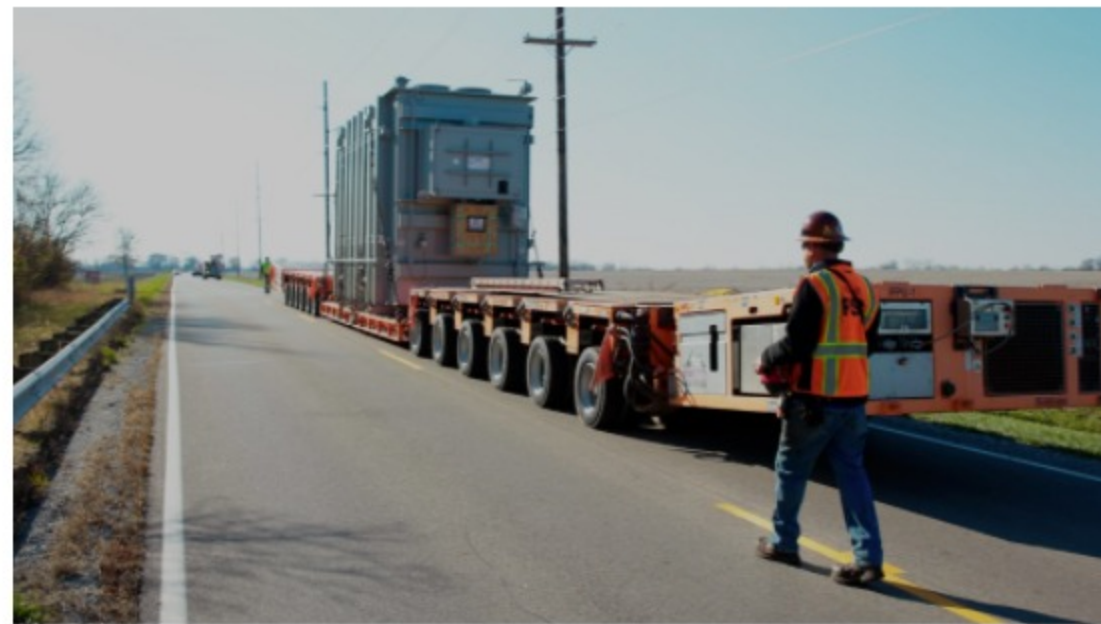
WHAT'S NEW



PSC is proud and excited to announce our further expansion into the Cincinnati market with the purchase of a 50,000-square-foot warehouse facility. The new facility boasts 40-foot high ceilings, 12-inch thick concrete floors, large overhead doors, a pair of 30-ton overhead cranes, and an additional 7 1/2-ton overhead crane—along with a large outdoor lay-down yard for customer equipment storage and parking for cranes and rolling stock.

The purchase of this new facility also allows for the offloading, storage, and handling of large overweight/over-dimensional loads, and can accommodate dual-lane transporters. Please contact Randy Sever should you have any upcoming warehouse storage needs.

FEATURED JOB



PSC recently utilized our 10-meter drop-deck trailer and a pair of six-line Goldhofer SPMTs to perform a "6-deck-6" over-the-road transport of a new 20' long x 9'6" wide x 16'8" tall transformer weighing 250,000 pounds. The transformer was received at a rail siding and then transported approximately four miles to its final destination where it was offloaded via jack & slide method onto a concrete pad in a live substation.

SAFETY

PSC's Bi-Annual Foreman Training assists in our responsibility as an employer to provide a safe and healthful workplace. This 2-day training focuses on OSHA, MSHA, DOT, and other required training standards as well as PSC's own policies and procedures. Significant focus is placed on two-way communication, hazard identification and mitigation, as well as the continued education, certification, and skills development needs of our team members.

Additionally, 2021's improved training shall incorporate operational topics such as leadership expectations, professional work ethic, and IT training to assist with email communications, security, and access to online safety policies and associated forms.

PSC will continue to invest in our team members training and education as we truly care for their safety and the wellbeing of every person who is impacted by our work. We have made safety a vital part of our Vision, Mission, Values & Beliefs, and accept our responsibility of guaranteeing that everyone goes home safe every day.

[Download PSC Foreman Training Agenda](#)

PSCIND.COM

DAYTON
4243 WEST U.S. RT. 36
PIQUA, OH 45356

COLUMBUS
9026 HERITAGE DR.
PLAIN CITY, OH 43064

CINCINNATI
200 OLYMPIC DR.
MILFORD, OH 45150



UNSUBSCRIBE FROM FUTURE EMAILS.